



New Beginnings for Newcomers.

# Research Impact Report 2026

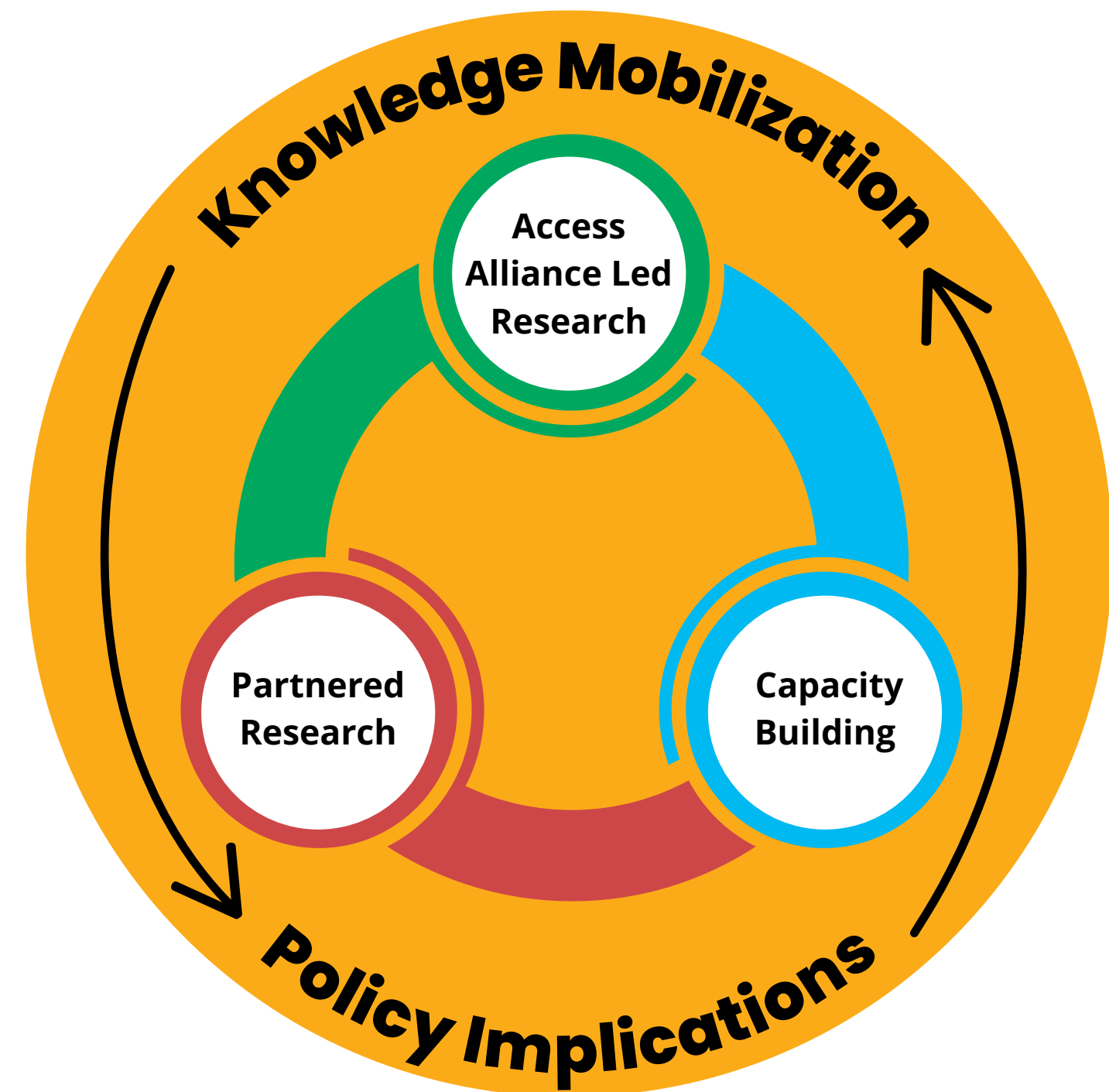
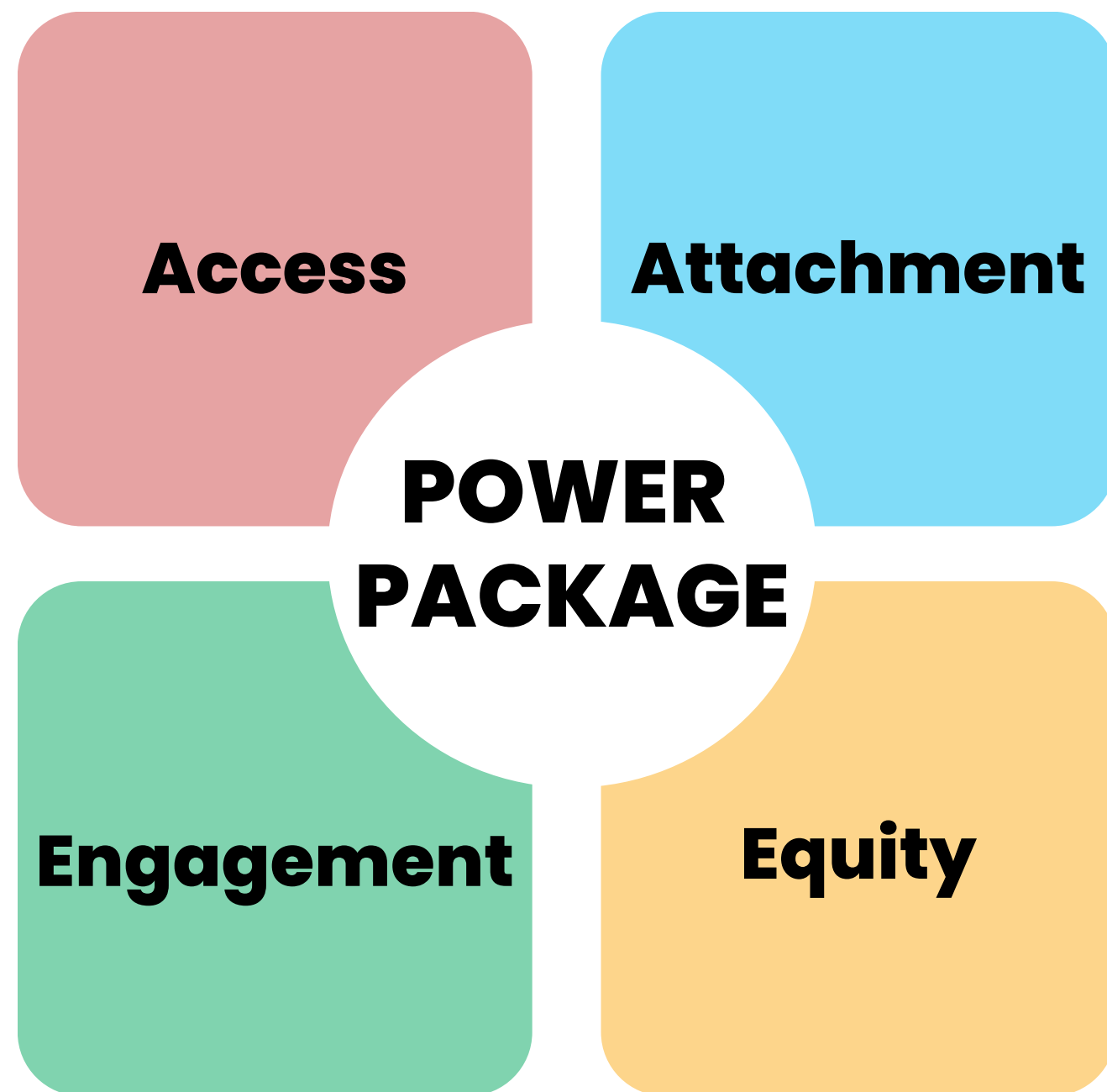
# Evidence-driven equity

Turning community knowledge into healthier, fairer systems  
for immigrants and refugees

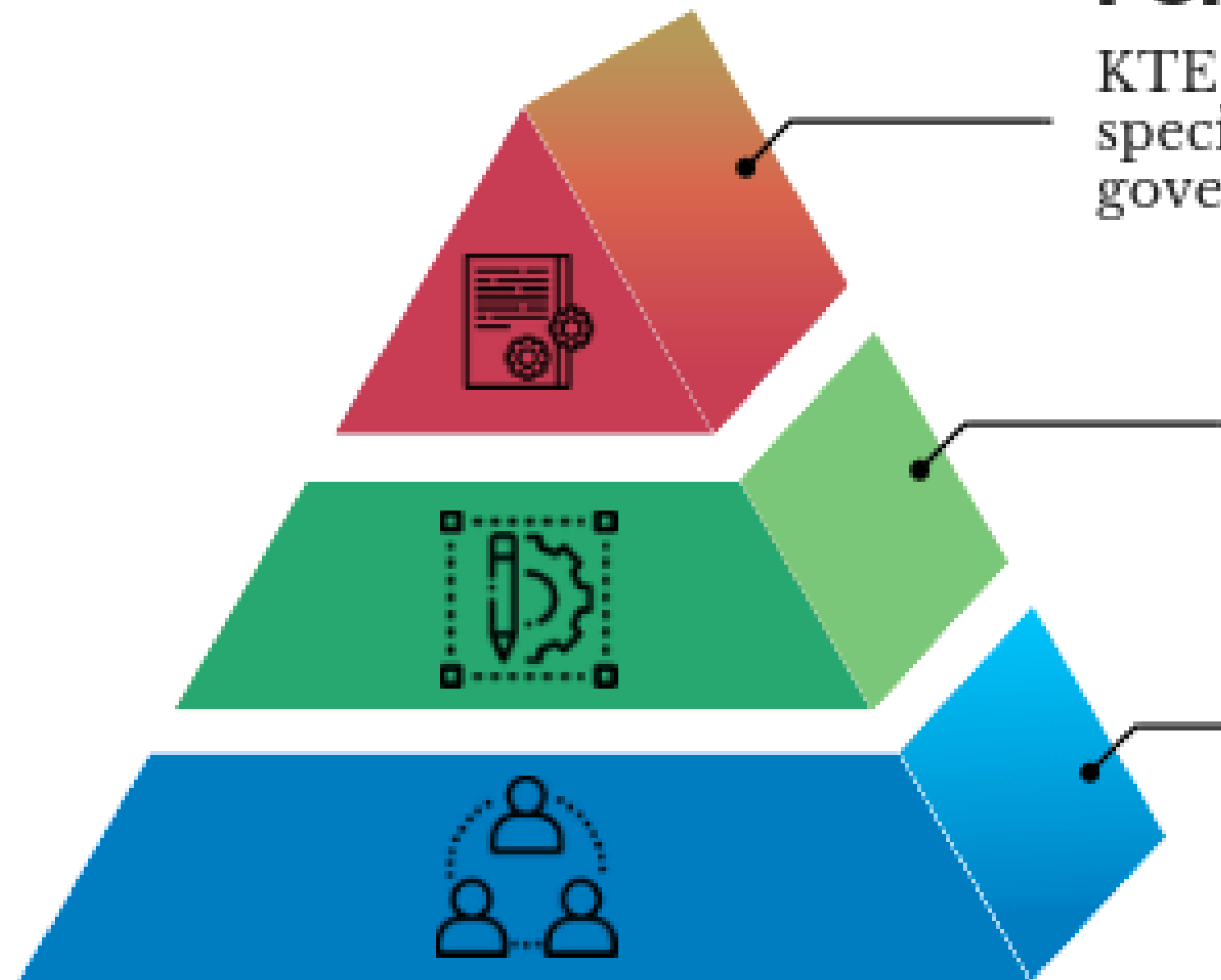
**Courtney Kupka, MHE**

Research and Evaluation Coordinator

# Community-based research and evaluation



# All levels of the system



## Policy

KTE activities and products for this level are geared specifically at informing policies and funding models at government level or at sector/system level.

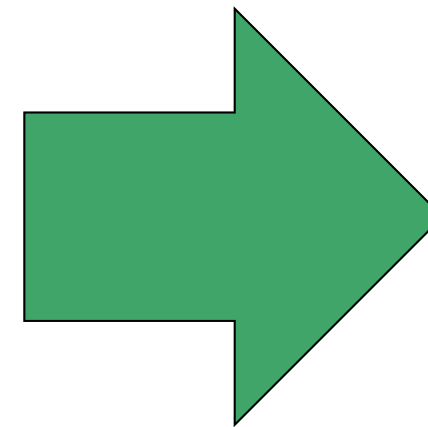
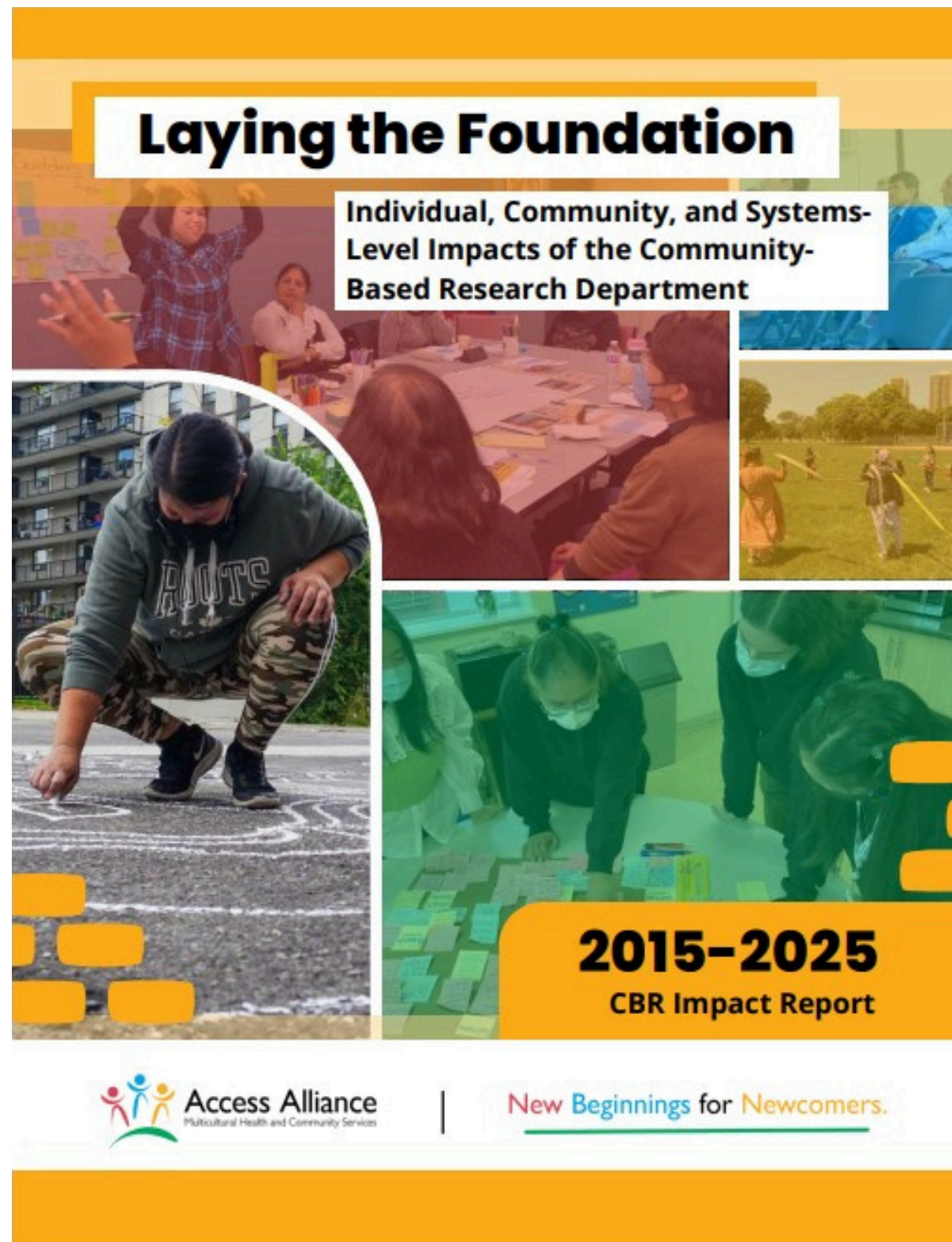
## Organizational

KTE activities & products for this level are focused on informing positive changes in organizational level programs, services, practices & culture.

## Community

KTE activities & products for this level are focused on overcoming knowledge & capacity gap among communities of interest &/or deepening public knowledge about the issue.

# Impact reports



# Research activities

- Attachment Readiness
- Black Children and Youth Mental Health
- Co-designing a Newcomer Health Plan
- Better for All Sustainability
- Hubs of Expressive Arts for Life (HEAL)
- Priority Peer Led Public Health Interventions for People Experiencing Homelessness
- Seniors Medication
- The Disproportionate Impact of COVID-19 on Immigrants and Refugees with Chronic Illnesses



# Evaluation activities

- Rockcliffe-Smythe and Mount Dennis Community (RS-MD) Health Needs Assessment
- Immigrant Researchers Support Network Program Evaluation
- Youth Service Needs Assessment
- Client Experience Survey
- Health Coaching Program Evaluation



# Capacity building

- Immigrant Insight Scholars
- Peer Researchers
- Student Placement
- Volunteers

33

of individuals hosted for practical learning or training experiences.



# Our Partners

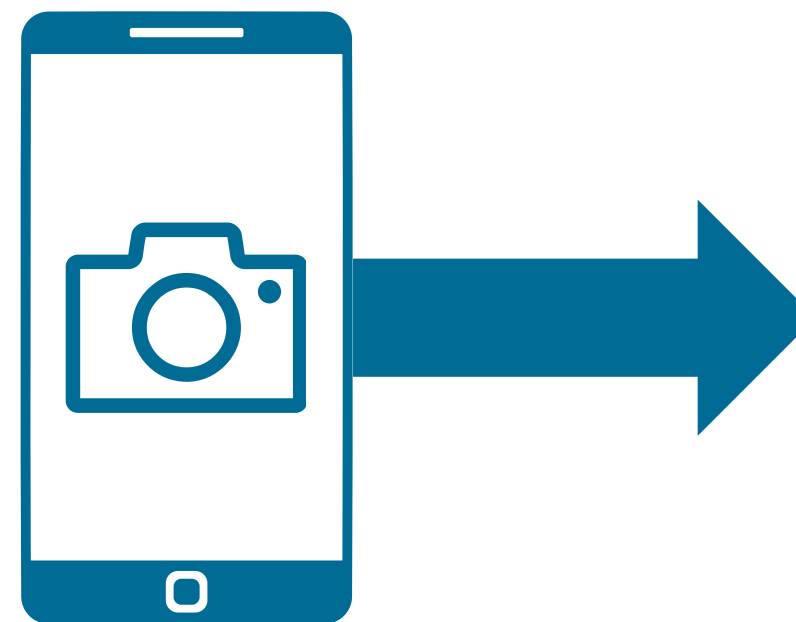
Ontario Health  
Public Health Agency of Canada (PHAC)  
University of Toronto  
Toronto Metropolitan University  
York University  
Western University  
University of Waterloo  
OCAD University  
University Health Network  
Sinai Health  
Sunnybrook Health Science Centre

Women's College Hospital  
Canadian Cancer Society  
Alliance for Healthier Communities  
Toronto Community Housing Corporation  
The Neighbourhood Group  
Bangladeshi-Canadian Community Services (BCS)  
Arab Community Centre of Toronto (ACCT)  
Holistic Sustainable Development Network  
(HSDN) International  
Hispanic Development Council  
Green Shield Canada





# Impact report 2026





New Beginnings for Newcomers.

# Thank you

---

**Community-Based Research and Evaluation Department**  
**research@accessalliance.ca**  
**416-324-0927 ext.3232**

**340 College St., Suite 500**  
**Toronto, Ontario M5T 3A9**  
**www.accessalliance.ca**

