



Navigating the Ethics of Displacement: **Trust, transparency, and power dynamics in research with or** **by the scholars in the community**

March 27, 2026

Akm Alamgir, PhD, MPhil, MBBS

<http://orcid.org/0000-0003-4804-6609>



Director

Organization Knowledge & Learning
Access Alliance Multicultural Health and
Community Services
research@accessalliance.ca



Adjunct Professor
School of Social Work

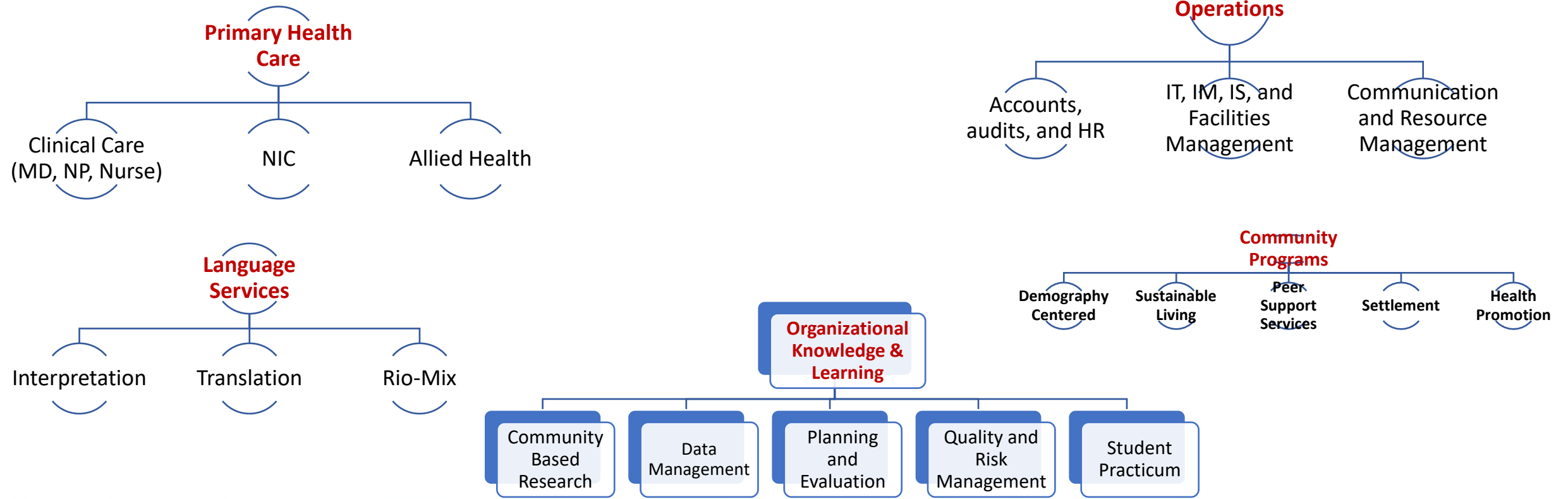
Faculty of Liberal Arts and Professional Studies
York University, Toronto | alamgir1@yorku.ca

Academic Editor
PLOS ONE
Editorial Board

Access Alliance Multicultural Health & Community Services

... is a leader in immigrant and refugee healthcare services serving at **three main locations** in Toronto and is governed by a community **Board of Directors**.

- Executive Director
- Associate Executive Director



Our Model: Conceptual Framework

Ideation/Consultation

Project Team Building
Scope identification/ Review of Lit
Budget and Resource Identification

Designing the Project

- Usability, Appropriateness, Feasibility, Fitness, Preparedness, Outreach Strategy

Creating a (Neighbourhood) Profile
Stakeholder Consultation

Developing/adopting Tools

- Sensitive & specific
- Valid and accurate
- Scalable and auditable
- Appropriate & Comparable

Implementation/Field Work

Engage Partners and Train the Team
Sequential Mixed Method Approach

Survey > Target # of surveys

- Purposive sampling with intentional heterogeneous recruitment

Focus Group / Informant Interview / World Café

- Characteristic-specific FGDs with lived experience experts
- Service Provider / other relevant stakeholder

Collaborative Data Analysis

- Analysis & triangulation
 - Quantitative: Descriptive & Inferential
 - Qualitative: Thematic analysis

KMb Product Development

Data Validation/Utilization

Report back

- Advisory teams
- Community

Deliverables

- Neighbourhood Profile
- CHNA Report
- Infographics
- Communiques

Implications

- Evidence-informed program planning
- Partnership/ resource allocation
- Collaborative Funding proposals
- Monitoring of inequities
- Policy advocacy / Policy ratification

Co-design Consultation



Questions

1. Who are the 'Scholars in the Community (SIC)' or 'Scholars At Risk (SAR)'?
2. What does the career/life of a displaced scholar look like?
3. Where do I go?
4. How can I convince that my credentials are valued?
5. How can I prove that I know research?

The Core
Challenges that
we learnt:

Structural
resistance

Temporal
career journey

The trust
deficit

Arteaga, Mariangela Castro, Mike Workentin, Gemechu Abeshu, **Ify Anene**, and Akm Alamgir. 2022. "Role and Level of Engagement of Peer Researchers in Systematic Reviews: A Review Article". Advances in Research; 23 (5):6-17. <https://doi.org/10.9734/air/2022/v23i530345>.

[engaging ...peers lived experience of the research of interest...in the research team for all levels of activities.]

Alamgir, Akm., Roy, P., and Taverna, F. (2024). Levels of Engagement of South Asian Participants in Health Research: Effectiveness of Community-Based Research (CBR) Framework. Journal of Scientific Research and Reports, 30(9):880-97. <https://doi.org/10.9734/jsrr/2024/v30i92415>.

[... trust, transparency, and perceived benefits of the end-users in the community...]

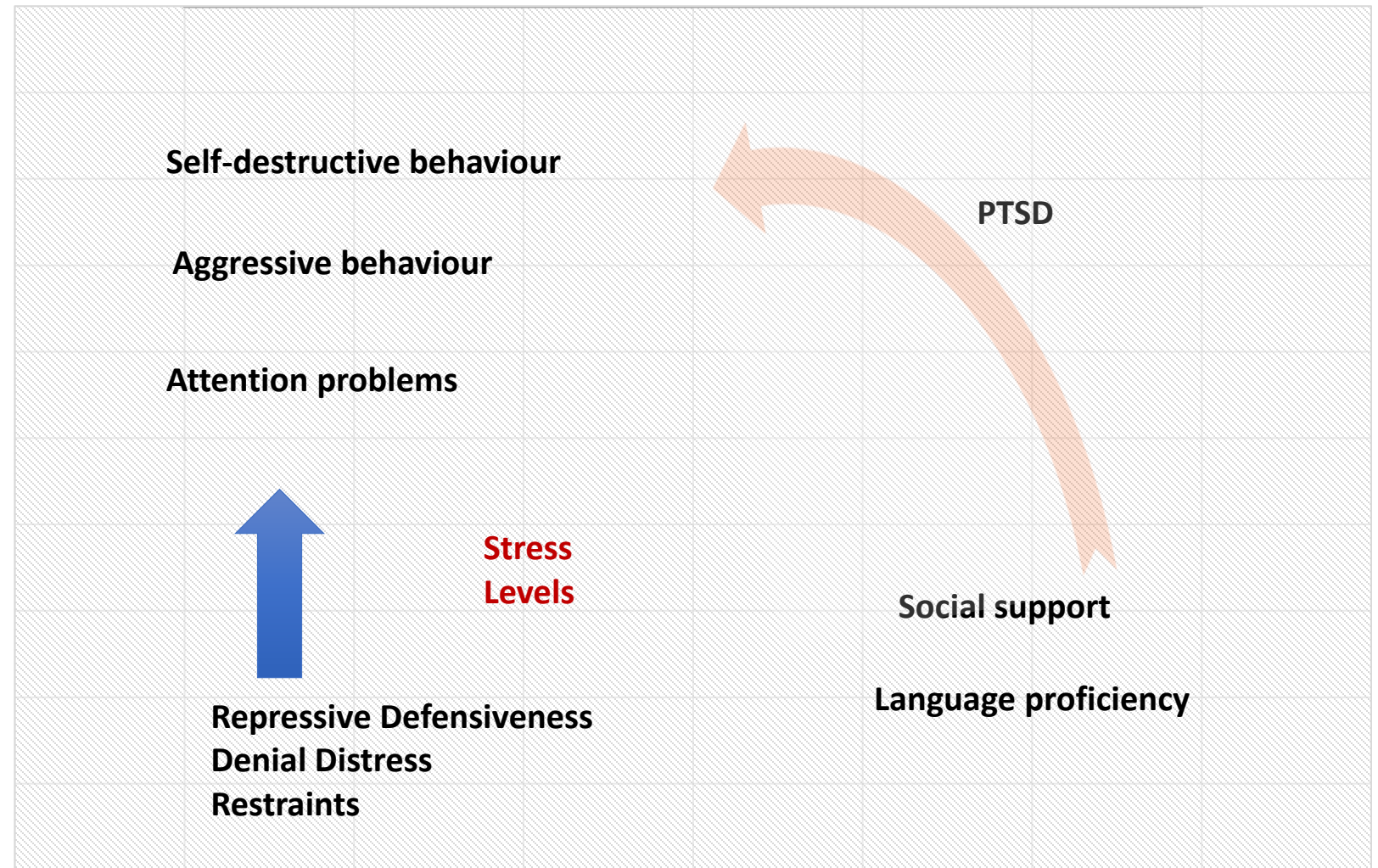
Fear of Identification: Displaced scholars struggle to maintain intellectual and ethical integrity.

Political tension: Research is often stifled by political polarization and local tensions.

Silencing Effect: Impacts both the researcher (credibility) and the informant (safety).



Psychological Impacts & Coping



The challenge is twofold: they must manage the trauma of their peers while simultaneously fighting for legitimacy within an academic system that views them with skepticism

Heading: Challenges for Researchers within the Community

They face significant "career gaps" (temporal barrier) caused by forced displacement, prolonged periods of hiding, or the slow-moving bureaucracy of international visa and asylum processes (structural barrier)

**The
"Community
Scholar"
Dilemma**

**The crisis of
trust**

Traditional Academic	Community Scholar
Institutional affiliation	Often unaffiliated
Structural credibility/Academic freedom	Credibility trap
Easier ethics approval	Struggles with Ethics Boards
Secure funding	Rarely funded



Heading: The Credibility Trap

- Lack of institutional affiliation blocks "official" ethics approval.
- **Credibility** on the ability to generate robust evidence.
- Perceived lack of transparency in the research process (**Transparency paradox**).
- Feeling disempowered to interpret benefits for their own community.

**Systemic
Barriers to
Integrity:**

**University
Socket**

"**Community Scholars**"—researchers from within the displaced population—face systemic exclusion from the academic "grid":

- **Credibility Gap:** Without university affiliation, their data is often unfairly labelled as "less robust."
- **The Ethics Hurdle:** Institutional Review Boards (IRBs) are rarely designed to accommodate unaffiliated, independent community researchers.
- **Funding Disparity:** Community-led initiatives are rarely funded, resulting in insufficient resources for transparent, high-quality processes.



Heading: Bridging the Gap: Systemic Intervention

Key Concept: Asset-Based Community Development (ABCD)

- [Asset Based Community Development Framework](#) [Discover-Welcome-Portray-Share-Vision]
 - **Gifts** (skills, experiences, knowledge, and passions) of residents who are co-producers
 - Power of **local associations**
 - **Supportive functions of local institutions** are needed to build more sustainable communities for the future (McKnight, 2017).

Conclusion:

Bridging the gap

Key Principles of the ABCD Approach:

- 1. Identify Assets:** Focus on the skills, hope, and innovation already present in the community.
- 2. Systemic Intervention:** Create institutional "adapters" (funding and ethics pathways) for community scholars.
- 3. Reciprocity:** Ensure research design includes immediate, beneficial outcomes for the participants.



Heading: Bridging the Gap: Systemic Intervention

Strategy:

- Move from a "deficit" view to an "asset" view.
- Bridge the gap between Academic and Community-Based Research.
- Change the "optics" of how power is distributed.

Models:

**Community
Incubators**

**Island of
Sanctuary**

**Universities
of Sanctuary**

**Scholars At
Risk**

Heading: Restoring Balance

• Summary:

- No "one size fits all" solution exists.
- Systemic change is required to empower community scholars.
- Research must provide tangible benefits to be ethical.

- Final Quote: "Research should be done with the community, not just on them."



Email: research@accessalliance.ca



Thank You

Questions?